

Leicester
City Council

WARDS AFFECTED: All

**Overview Scrutiny Management Board
Cabinet**

**8th November 2007
12th November 2007**

CLIMATE CHANGE - THE NEXT STEPS

Report of the Corporate Director Regeneration and Culture

1. Purpose of Report

To propose a new way of managing and integrating the next steps in implementing Leicester's Climate Change Strategy adopted by the Leicester Partnership in 2003 and Part 1 of the city council's own action plan which was adopted by cabinet in March 2007.

2. Summary

Leicester City Council's Climate Change Action Plan (CCAP) was adopted in March 2007 and the programme of actions is currently being implemented. This report sets out a new structure for widening participation of Member's and the Leicester Partnership in delivering on our city wide CO₂ target. It proposes that Eco management and Audit Scheme (EMAS) be used as a tool for monitoring Climate Change targets and actions. This report also details new actions and the new emphasis that accord with the new administration's manifesto commitments.

3. Recommendations

1. Overview & Scrutiny Management Board are invited to comment on the proposals.
2. Cabinet are recommended to:
 - Agree the proposed structure and Cabinet Lead responsibilities to champion further work on climate change (appendices 1 and 2).
 - Agree the proposed timeframes and new actions, which accelerate implementation of the Climate Change Strategy for the city.

4. Report

The case for action

- 4.1 The Cabinet's emerging priority is to make "Leicester the most sustainable city in Britain" one significant aspect of this is refreshing and delivering the Climate Change strategy. The strategy specifically references the setting up of an energy company, purchasing renewable energy, expanding energy efficiency and reducing fuel poverty. The manifesto also contains commitments to increasing green space and trees that will assist the city in adapting to climate change.

- 4.2 Our climate is already changing and there is a challenge for all levels of government, private sector and individuals to act now to reduce our CO₂ emissions substantially, before the levels of CO₂ result in a catastrophic temperature rise. The Stern report outlines the economic arguments for taking action now, rather than waiting and taking more costly action later. The Nottingham Declaration commits the council to a timeframe of action by November 2008. In addition, it makes sense to act while the issue is in the public eye, as media and public interest in Climate Change will not be sustained forever.

Policy Context

- 4.3 Leicester City Council signed the Nottingham Declaration on Climate Change in 2006, which commits the organisation to a package of measures to address Climate Change in the city (appendix 3). These measures include both “mitigation”, i.e. steps to reduce our CO₂ emissions and “adaptation” measures where we put in place steps to adapt to climate change that is already inevitable.

Signing the declaration follows a long-term policy commitment from the 1990’s when LCC was a member of the international “Cities for Climate Protection Campaign” run by the International Council for Local Environmental Initiatives (ICLEI). Leicester City Council became a beacon council for sustainable energy efficiency in 2005.

- 4.4 The Leicester Partnership’s Local Area Agreement target for the city is a 50% reduction on 1990 levels of greenhouse gas emissions (converted to CO₂ equivalent) by 2025. This target arises from the Leicester Climate Change Strategy 2003 (www.leicester.gov.uk/climatechange). The City Council had already adopted the same target for its own estate in 1994.
- 4.5 Leicester City Council has had EMAS registration since 1999 and has been using EMAS as a tool to manage energy use and a wide range of significant effects since this date. Targets already exist on a number of key climate change issues: energy, water use, renewable energy and transport.

Progress to date

- 4.6 By 2006 the Council had reduced its overall emissions of CO₂ by an estimated 25% whilst city-wide emissions had fallen 10% during the same period. (Based on De Montfort University’s use of the “Cities for Climate Protection” model, run in 2007). However, it was reported to cabinet in March that a step change in effort is now needed to sustain the early successes as council energy consumption has started to rise.
- 4.7 To initiate a step change in action, the following actions took place during 2006-7:

City-wide

- A campaign group to raise awareness and encourage action amongst partners known as Climate Change “What’s Your Plan”. This was launched with the showing of Al Gore’s film “An Inconvenient Truth” at the Phoenix by the Leicester Partnership.
- Resources from the NRF to appoint two new posts for the Leicester Partnership: a Climate Change advisor and a Head of Environmental Sustainability senior post
- Inclusion of CO₂ as an indicator within the LAA

- De Montfort University commissioned to model CO2 emissions for the city

Leicester City Council

- Approval of Part I Climate Change Action Plan for LCC – Mitigation, with 24 intermediary actions being agreed within LCC up to April 2008.
- The approval to appoint an Energy advisor within LCC to assist managers with energy reduction in LCC buildings
- A successful growth bid for a new Climate Change Officer for LCC and to continue to fund the Leicester Better Buildings Officer
- Feasibility work started to create an energy company for the city

The next steps

4.8 The Nottingham Declaration requires the council to take action with respect to;

- Estate management
- Service provision
- As a community leader

In order to fulfil these obligations and the new administration's ambitions the following further actions are proposed:

4.9 Leicester City Council as estate manager and service provider will now:

- Complete Stage 2 of the LCC Action plan on adaptation of LCC services to Climate Change
- Integrate the Climate Change Action Plan into the EMAS process. Review and develop further actions for Climate Change mitigation (the initial actions set up the infrastructure for LCC to act on Climate Change and are due for completion by March 2008).
- Measuring and monitoring Climate Change will be undertaken as an integral part of the EMAS system.

4.10 As a community leader, Leicester City Council will:

- Continue to resource and expand the role of "Climate Change What's Your Plan" promotional group to reach out to partners and communities to progressively address the impacts of climate change, as set out in the Nottingham Declaration.
- Work through existing council projects to take a leadership role on climate change mitigation – for example through the EMAS Schools work, Neighbourhood management, as a partner to Groundwork Leicester and Leicestershire, etc.
- Provide the framework to encourage and support key organisations to develop their own plans.
- Work within the regional, national and European contexts to join up our approach to Climate Change, take on new practices and initiatives and achieve economies of scale in procurement and promotion.

Proposed structure for the next steps

4.11 To deliver the next steps, Appendix 1 outlines a suggested new Corporate Framework and responsibilities to promote the involvement of every Cabinet Member and ownership across the Council's management structure. Clear Cabinet lead responsibilities and a single Programme Board involving key Partners are proposed (A number of "start and finish" project teams will be

established, relating both to the urgency of the issue and the timeframe imposed by the Nottingham Declaration). The Climate Change Programme Board will meet bi-monthly and Cabinet leads will be assigned to work with particular project teams. The Programme Board will feed into the Overview Scrutiny Management Board and the Environment and Sustainability Task Group. As community leaders all councillors will be involved in considering projects through Community meetings.

- 4.12 The Environment Team will work with the Head of Sustainability to provide advice on prioritising actions and city-wide initiatives to meet the targets set. EMAS will be used to manage the delivery of in-house action to prevent the duplication of systems. This responds positively to earlier concerns expressed at Corporate Directors Board and to a specific minor non conformity raised by the EMAS Verifiers in their May 2007 report.

The proposed structure will

- Align with the new administration
- Assign clear roles and responsibilities to officers and Members based on the principles of Prince 2 project management
- Create a project board to facilitate quick decision making and hold individuals and services to account
- Utilise the 3 additional officers secured during the previous financial year
- Provide a framework for promoting in-house cross-departmental action and decision making, incorporating the Climate Change Action plan and corporate projects outlined in Appendix 2
- Provide a forum for developing city-wide action and build upon existing partnership links
- Use EMAS as the performance management system

Appendix 1 and 2 provide further explanations of roles and responsibilities.

Proposed timeframe

- 4.13 The timeframe proposed will help meet our commitments from the Nottingham Declaration these are:

By Jan 2008 Leicester City Council should:

- Complete Stage 2 of the LCC Action plan on adaptation
- Ensure mitigation actions are sufficient to achieve the in house CO₂ target

By October 2008 Leicester Partnership should

- Have started to develop plans with partners and local communities to address both mitigation and adaptation measures
- Reviewed the likely impact of these plans on meeting the city-wide CO₂ target
- Have agreed a framework of future action sufficient to achieve the city-wide target.

It is proposed that the project board would meet bi-monthly to be able to deliver within this timeframe.

5. Financial, Legal and other Implications

Financial Implications

- 5.1
- The funding of Leicester City Council's Climate Change officer and the Leicester Better Buildings officer was agreed as part of the 2007/08 budget.
 - Funding of the Leicester Partnership Climate Change officer and the Head of Environmental Sustainability has been secured through Leicester Partnership NRF funding, initially for one year, 2007/08.
 - The Climate Change Action Programme initial work is being funded from Departments' existing budgets. The programme contains a number of reviews and assessments and the outcomes together with associated financial implications will be reported to separately.

Martin Judson Head of Finance R&C Ext 29 7390

Legal Implications

5.2 The statutory obligation on the Council to make arrangements to secure "Best Value" favours energy reduction measures over paying to compensate for energy usage.

- If Corporate Directors Board/Cabinet considers that these proposals promote or improve the City's environmental well-being, then (except for the creation of an energy company) the Council has the power to take the steps outlined.
- s. 95 Local Government Act 2003 gives the Council a power to do for a commercial purpose anything that it is authorised to do for the purpose of carrying out any of its ordinary functions. Though a wide power, it does not permit the Council to create an energy company and sell electricity.

Greg Surtees, Senior Solicitor, Legal Services, Ext. 29 6453

6. Other implications

OTHER IMPLICATIONS	YES/NO	PARAGRAPH REFERENCES WITHIN THE REPORT
Equal Opportunities	no	
Policy	yes	Nottingham Declaration Leicester Climate Change Strategy EMAS
Sustainable and Environmental	yes	(para 2.5) EMAS will be used to help deliver the methodology proposed
Crime and Disorder	no	
Human Rights Act	no	
Older People on Low Income	no	

7. Risk Assessment Matrix

	Risk	Likelihood L/M/H	Severity Impact L/M/H	Control Actions (if necessary/or appropriate)
1	Failure to meet LCC own targets	M	H	
2	Failure to meet city targets	H	H	

L - Low

M - Medium

H - High

L - Low

M - Medium

H - High

8. Background Papers – Local Government Act 1972

- Leicester Partnership Climate Change Strategy 2003
- Report to Cabinet - Leicester City Council's Climate Change Action Plan part 1 Mitigation – 12th March 2007
- The Nottingham Declaration on Climate Change (signed by LCC 2/11/06) www.nottinghamdeclaration.org.uk

9. Consultations

Ann Branson, Adults and Housing

10. Report Author

Andy Keeling/Carol Brass/ Anna Dodd
Regeneration and Culture

andy.keeling@leicester.gov.uk

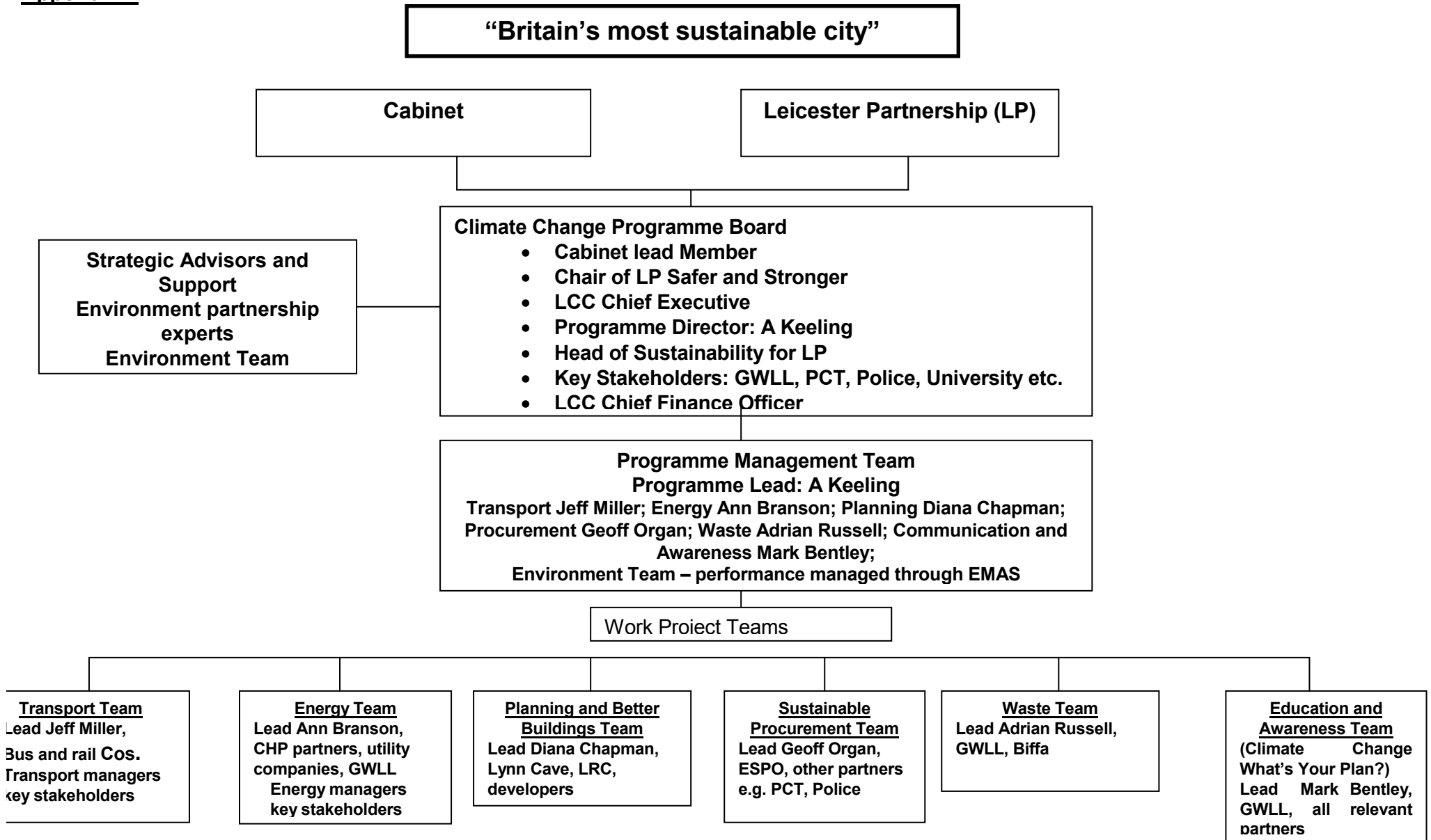
carol.brass@leicester.gov.uk

anna.dodd@leicester.gov.uk

DECISION STATUS

Key Decision	Yes
Reason	Significant effect on one or more wards
Appeared in Forward Plan	Yes
Executive or Council Decision	Executive (Cabinet)

Appendix 1



Appendix 2

“Britain’s most sustainable city”

Aim: To become Britain’s most sustainable city

CLIMATE CHANGE OBJECTIVES

1. To reduce CO₂ by 50% in Leicester by 2025 from 1990 baseline
2. To adapt our communities to better face the risk of flooding/drought/heatwaves by 2030

CABINET LEADS CHAMPIONING PROJECTS:

Councillor Wann		<ul style="list-style-type: none">- Extending CHP- Waste/Recycling targets- 10,000 trees- Deliver wind turbines- Embedding climate change in EMAS- Construction and Waste Demolition Recycling facility- “Climate Change - What’s Your Plan?” campaign- Energy from Waste
Councillor Kitterick		<ul style="list-style-type: none">- Ashton Green Ecovillage- Delivering Park and Ride to maximise bus usage- Promoting engagement in the business community inc. Travel Plans- Better new buildings (Planning process)- Greening the Vehicle Fleet- Digital Media Centre
Councillor Connelly		<ul style="list-style-type: none">- Energy Conservation in Leisure facilities- Greening the PAC
Councillor Dempster		<ul style="list-style-type: none">- Extending EMAS in schools- Deliver wind turbines in schools- Curriculum design and support- Greening BSF
Councillor Bhatti	}	- Develop renewable energy sources
Councillor Corral	}	- Minimise fuel poverty
		- Conserve energy in houses
Councillor Osman		<ul style="list-style-type: none">- Raising awareness and commitment in the BME Community/LACBA/LABA
Councillor Manjula Sood		<ul style="list-style-type: none">- Greening the LIFT project- Linking sustainability to Health inequalities
Councillor Draycott (Deputy Leader)		<ul style="list-style-type: none">- Promoting local environmental schemes and initiatives through Ward Committees

- Rigorous performance management and audit

Councillor Willmott (Leader)

- Greening CLABS
- Forming Staff Travel Plans
- Sustainable Procurement

SCOPE

Ward, Council, LP, Region, Central Government, EU.

The Nottingham Declaration on Climate Change

We acknowledge that

- Evidence shows that climate change is occurring.
- Climate change will continue to have far reaching effects on the UK's people and places, economy, society and environment.

We welcome the

- Social, economic and environmental benefits which come from combating climate change.
- Emissions targets agreed by central government and the programme for delivering change, as set out in the UK Climate Change Programme.
- Opportunity for local government to lead the response at a local level, encouraging and helping local residents, local businesses and other organisations - to reduce their energy costs, to reduce congestion, to adapt to the impacts of climate change, to improve the local environment and to deal with fuel poverty in our communities.
- Endorsement of this declaration by central government.

We commit our Council from this date 2nd November 2006 to

- Work with central government to contribute, at a local level, to the delivery of the UK Climate Change Programme, the Kyoto Protocol and the target for carbon dioxide reduction by 2010.
- Participate in local and regional networks for support.
- Within the next two years develop plans with our partners and local communities to progressively address the causes and the impacts of climate change, according to our local priorities, securing maximum benefit for our communities.
- Publicly declare, within appropriate plans and strategies, the commitment to achieve a significant reduction of greenhouse gas emissions from our own authority's operations, especially energy sourcing and use, travel and transport, waste production and disposal and the purchasing of goods and services.
- Assess the risk associated with climate change and the implications for our services and our communities of climate change impacts and adapt accordingly.
- Encourage all sectors in our local community to take the opportunity to adapt to the impacts of climate change, to reduce their own greenhouse gas emissions and to make public their commitment to action.
- Monitor the progress of our plans against the actions needed and publish the results.

LEICESTER CITY COUNCIL acknowledges the increasing impact that climate change will have on our community during the 21st century and commits to tackling the causes and effects of a changing climate on our city/county/borough/district.